



St Therese of Lisieux PS Drugs Policy

Contents	Page Number
Rationale	3
Definitions	3
Ethos	4
Aims and Objectives	4
Roles and Responsibilities	5
Legal Responsibilities and Involving the PSNI	8
Drug Education Programme	9
Administering Prescribed Medication	9
Responses to a suspected drug-related incident	10
Finding drug related paraphernalia	12
Recording an incident	13
Links with other policies	15
Appendix	16

Rationale

We believe that St Therese of Lisieux Primary School has a vital preventative role to play in combating the misuse of drugs by young people and we therefore include a drugs education programme in our curriculum.

This school sees its role as that of a caring community committed to the physical, mental, social, emotional, moral and spiritual health, safety and well-being of our pupils and staff.

We want our pupils to make informed and responsible decisions about drugs by increasing their knowledge and by developing in them appropriate values, attitudes and skills. However, we recognise that drug misuse is a whole-community issue and that schools alone cannot solve the drugs problem; the school is only one of a number of groups and agencies which must play a part in the education of young people and we make use of their expertise where possible in the delivery of the programme.

For the purpose of this document the term 'drugs' includes tobacco, alcohol, over-the-counter and prescribed medication, volatile substances and controlled drugs. This school does not condone the misuse of drugs. We recognise that there has been a considerable increase in the abuse of drugs in recent years in Northern Ireland. Drug misuse appears to be affecting an ever-younger population and the so-called "recreational" use of drugs can lead to a dangerous acceptance of illegal and harmful drug misuse as part of everyday life.

Copies of the guidance on which this policy is based (Drugs: Guidance for schools in Northern Ireland) are available from the Department of Education website www.deni.gov.uk (Circular 2004/09 and 2015/23).

Definitions

For the purpose of this document and in line with the guidance issued to all schools by the Department of Education (2004/09 and 2015/23) the term drugs includes any substance which, when taken, has the effect of altering the way the body works or the way a person behaves, feels, sees or thinks.

As well as everyday substances such as tea and coffee, drugs include:

- alcohol and tobacco;
- E cigarettes (banned on school premises by DE Circular 2014/25)
- "over-the-counter" medicines, such as paracetamol;
- prescribed drugs, such as antibiotics, tranquillizers, inhalers and Ritalin;
- volatile substances, such as correcting fluids/thinners, gas lighter fuel, aerosols, glues and petrol;

- controlled drugs, such as cannabis, LSD, Ecstasy, amphetamine sulphate (speed), magic mushrooms (processed), heroin and cocaine;
- new psychoactive substances (NPS), formerly known as legal highs*, which contain one or more chemical substances that produce similar effects to illegal drugs and are sold as incense, salts or plant food and marked 'not for human consumption' to avoid prosecution; and
- Other substances such as amyl/butyl nitrite ('poppers') and unprocessed magic mushrooms.

Ethos

***"With a smile and a helping hand we inspire the children of today become
the adults of tomorrow."***

St Therese of Lisieux Primary School aims to provide a supportive, positive learning environment which fosters pupil growth and development. This ethos is underpinned by our code of faith and pastoral care. We are committed to providing our pupils with a positive attitude towards Catholic education. Christ's values and gospel message are an intrinsic part of our ethos, daily running of the school and our curriculum. We try to ensure that we work in partnership with the home, parish and the wider community to strengthen our pupils' vision of their role as part of the Catholic community. This policy reflects the ethos of our school.

Aims and Objectives

- To have a clear and agreed understanding among everyone in the school community about the implications and possible consequences of drug use/misuse.
- To provide all staff (teaching and non-teaching) with adequate training and support to enable them to deal effectively and confidently with incidents of suspected drug misuse, and to ensure that the agreed procedures are consistently and sensitively applied in all situations.
- To empower teaching staff through appropriate training and support to develop and deliver an effective drug education programme.
- To provide a drug education programme which
 - ✓ develops pupils' self-esteem and promotes positive attitudes in their relationships with others;

- ✓ gives pupils' opportunities to develop the values, skills, knowledge and understanding necessary to make informed and responsible decisions about the use/misuse of drugs including tobacco, alcohol and volatile substances, within the context of a healthy lifestyle; and
 - ✓ Helps pupils develop the skills necessary to assert themselves confidently and resist negative pressures and influences.
- To provide appropriate support and assistance for those pupils affected by drug-related issues.
 - To inform parents of the content of this policy and the procedures to be implemented in the management of incidents of suspected drug misuse.
 - To establish an environment in which the school is free from the misuse of all drugs.

Roles and Responsibilities

The Board of Governors

The BOG understand their responsibilities for our school. They collaborate with staff, pupils and parents or carers as appropriate in the development and review of our Drugs Policy. They also:

- Ensure the policy is published and that it is reviewed at regular intervals.
- Be fully aware of the procedures required to deal with suspected drug related incidents, including tobacco and alcohol, tobacco related products, electronic cigarettes, and their appropriate disciplinary response.
- The Designated Governor for Safeguarding and Child Protection is also the Designated Governor for Drugs and will work with the Principal and Designated Teacher for Drugs (VP) in relation to drug related issues.

The Principal

It is the Principal's responsibility to determine the circumstances of all incidents, but it is the responsibility of the PSNI to investigate any criminal or suspected criminal offence. In any suspected drug-related incident, the Principal should contact the parents or carers of those pupils involved. The Principal must

ensure that in any incident involving a controlled substance there is close liaison with the PSNI. **Failure to inform the PSNI of a suspected incident involving controlled drugs is a criminal offence.**

After contacting the PSNI, the Principals will confine their responsibilities to:

- the welfare of the pupil(s) involved in the incident and the other pupils in the school;
- health and safety during the handling, storage and safe disposal of any drug or drug related paraphernalia, using protective gloves at all times;
- informing the Board of Governors;
- agreeing any appropriate pastoral or disciplinary response;
- reporting the incident to the Education Authority or CCMS if appropriate, for example if an incident:
 - is serious enough to require PSNI involvement;
 - requires that a child protection procedure is invoked; or
 - leads to the suspension or exclusion of a pupil; and
- completing a written report and forwarding a copy to the Board of Governors and the designated officer in the Education Authority and CCMS.
- ensure that members of the Board of Governors have been consulted on and ratified the policy.

The Designated Teacher for Drugs (Vice Principal)

The designated teacher is responsible for:

- co-ordinating the school's procedures for handling suspected drug-related incidents and training staff in these procedures;
- ensuring that the school's disciplinary policy has an appropriate statement about any disciplinary response resulting from suspected drug-related incidents;
- ensuring that the school's Pastoral Care Policy has an appropriate statement about any pastoral response resulting from suspected drug-related incidents;
- liaising with other staff responsible for pastoral care;
- being the contact point for outside agencies that may have to work with the school or with a pupil or pupils concerned;
- responding to advice from first aiders, in the event of an incident, and informing the Principal, who should contact the pupil's parents or carers immediately;
- taking possession of any substance(s) and associated paraphernalia found in a suspected incident;
- completing a factual report using the schools Drug-Related Incident Form, which they forward to the Principal; and

- reviewing and if required updating the policy at least every three years or after a drug-related incident, where learning from the experience could improve practice.

All staff (teaching and non-teaching)

All staff should be familiar with the content of the school's Drug Policy. They should also be fully aware of their responsibilities, should a suspected drug-related incident occur. It **is not the staff's responsibility to determine the circumstances surrounding the incident or carry out an investigation**, but they should:

- assess the situation and decide on the appropriate actions to take;
- notify the principal and the designated teacher for drugs at the earliest opportunity;
- deal with any emergency procedures to ensure the safety of pupils and staff, if necessary (see Appendix 4.2);
- forward any information, substance or paraphernalia received to the designated teacher for drugs, who will respond accordingly (see Appendix 4.1);
- use the school's Drugs Incident Report Form to complete a brief factual report on the suspected incident and forward this to the designated teacher for drugs (see Appendix 1);
- consider the needs and safety of a pupil when discharging him or her into the care of a parent or carer who appears to be under the influence of alcohol or another substance (staff, who are in loco parentis, should maintain a calm atmosphere when dealing with the parent and, if concerned, should discuss with the parent alternative arrangements for caring for the pupil); (see Appendix 4.5) and
- invoke safeguarding procedures, if a parent or carer's behaviour may place a pupil at risk (see Appendix 4.5).
- forward any information, substance or paraphernalia to the designated teacher for drugs who may have to take immediate action.

Teachers delivering the Drug Education programme

In addition to the above:

- Deliver the school's drug education through the PDMU programme.
- Create an atmosphere in the classroom in which pupils can freely contribute to discussion, safe in the knowledge that the comments, ideas and feelings of the group are valued.
- Support pupils in their class if necessary.
- Liaise with the PDMU Coordinator regarding any aspect of the programme/policy, as necessary

The Building Supervisor

- Be vigilant around and conduct regular checks of the school grounds for drug-related paraphernalia, and inform the designated teacher for drugs as appropriate.
- Ensure the safe storage, handling and disposal of potentially harmful substances such as solvents and cleaning fluids.

Pupils

- Be aware of and adhere to school rules in relation to drug use/misuse, including tobacco, alcohol, over-the-counter and prescribed medication, volatile substances and controlled drugs.

Parents/Guardians

- Support the school in the development and implementation of this policy, including the school's procedures for handling incidents of suspected drug misuse and the drug education programme.

Legal responsibilities and involving the PSNI

All staff must be aware of their legal responsibilities. Schools must notify the PSNI in all instances where there is an allegation or suspicion that a crime has been committed. **Failure to notify the PSNI is a criminal offence.**

Staff must be aware of the legal implications of:

- receiving information about a controlled drug;
- discovering a young person in possession of a controlled drug; or
- discovering a young person is involved in supplying a controlled drug.

A summary of relevant legislation is available at www.ccea.org.uk

Contacting the PSNI

Schools must notify their local PSNI officer in every case where a pupil has or is suspected of having controlled drugs in their possession, either on their person or in their belongings, or if controlled drugs are found on the school premises. This may include new psychoactive substances or prescription medication. Schools are not legally obliged to notify the PSNI if they suspect the misuse of solvents or alcohol. However, in a primary school this is a safeguarding issue and the Designated Teacher will seek advice from the Child Protection Support Service for Schools.

The Drug Education Programme

The Drug Education Programme in this school is integrated within the curricular area PDMU. The programme provides opportunities for pupils to:

- acquire knowledge and understanding in relation to drug use/misuse;
- identify values and attitudes in relation to drug use/misuse;
- develop skills to enable them to consider the effects of drugs on themselves and others; and
- make informed and responsible choices within the context of a healthy lifestyle.

These will be appropriate to the pupils' age and understanding and will include:

- Information on how the body works
- Safe and unsafe substances used in home and school
- Medicines and tablets
- Personal likes and dislikes
- Being friends with others
- Learning how to say "NO"
- Respect and caring for oneself
- Respect and caring for others

Administering Prescribed Medication

Teaching staff are not contractually required to administer medicine to pupils. This is a voluntary role and teachers may choose to assist in the administration of medicines. However, some Classroom Assistants are employed on contracts which require them to administer medicine and/or carry out certain medical procedures. Some pupils have long term complex medication needs and the school will endeavour to support these pupils so that they can attend school regularly and take a full and active part in school life. Medication should only be taken in school when absolutely essential and with the agreement of the Principal or Vice Principal. Appropriate care plans and consent forms must be in place before any medication is accepted by school staff in accordance with the schools Supporting Pupils with Medication Needs Policy.

If a member of staff administers medication in accordance with the Supporting Pupils with Medication Needs Policy, the employer will indemnify the member of staff.

Responses in the event of a suspected drug-related incident

Illness, unusual or uncharacteristic behaviour

Young people's behaviour may be unpredictable and bizarre for many reasons during their time at school. Changes in behaviour may indicate a range of difficulties and problems and may be related to a medical condition, rather than substance misuse. It is, however, important to note that intoxication, physical collapse or unconsciousness can also result from an initial experiment with drugs.

Staff should bring any indications of illness, unusual or uncharacteristic behaviour because of suspected substance misuse to the attention of the Designated Teacher for Drugs. They should not make any judgement until they have determined the circumstances surrounding the incident. Where staff believe a pupil may have taken a substance they suspect is a drug, they should seek medical assistance immediately after following the recommended emergency procedures. The school must inform parents and the PSNI.

You can find more information about recognising signs of substance use in Appendix 5. For further details, search for *Signs and Symptoms of Drug Use* at www.ccea.org.uk

Appendix 4.2 details emergency procedures.

Taking possession of a suspected controlled substance and/or associated paraphernalia

The law permits school staff to take temporary possession of a substance suspected of being a controlled drug to protect a pupil from harm and prevent the pupil committing the offence of possession. The teacher should, using appropriate safety precautions, take the suspected substance and any associated equipment and/or paraphernalia to the designated teacher for drugs as soon as possible. They should arrange for its safe storage until the school can hand it over to the local PSNI officer to identify whether it is a controlled substance. **School staff should not attempt to analyse or taste an unidentified substance.** An adult witness should be present when staff confiscate the substance and the school should keep a record of the details, using the school's Drug Incident Report Form. (Appendix 1)

An allegation of a suspected controlled drug-related incident

Carrying out a search

If the designated teacher for drugs receives an allegation of possession, he or she may need to search a pupil's desk, if he or she has cause to believe it contains unlawful items, including controlled drugs. However, teachers cannot search personal belongings in the desk without consent. Staff should only

search the pupil's personal belongings, including schoolbag, coat or other items with the pupil's consent. Staff should carry out this search in the presence of the pupil and another adult witness.

If the school suspects pupils of concealing controlled drugs on their person or in their personal belongings, staff should make every effort to encourage them to produce these substances voluntarily. Staff should ask pupils to turn out their pockets or schoolbags. If the pupils refuse, staff should contact their parents or carers and the PSNI to deal with the situation. **A member of staff should never carry out a physical search of a pupil, unless there is compelling evidence that the pupil has committed an offence.** If staff recover a substance or an object that they suspect has a connection with drugs, they should take possession of it and make a full record using the school's Drug Incident Report Form.

If a pupil refuses to be searched the school must establish whether the probability that the pupil has committed an offence outweighs their right to privacy, before deciding whether to carry out a search without consent. The school drugs policy should clearly explain the procedures and circumstances for searches where there is reason for suspicion.

Detaining a pupil

When managing a suspected drug-related incident the school should invite the pupils concerned to remain in school under the supervision of appropriate members of staff until their parents or carers and the PSNI arrive.

If the pupil refuses to remain, the school cannot detain a pupil against their will. However, if a member of staff has reasonable grounds to suspect that the pupil has in their possession or has taken a controlled substance, they can make a citizen's arrest under Article 26A of the Police and Criminal Evidence (Northern Ireland) Order (PACE) 1989.

- A person other than a constable may arrest without a warrant:
 - anyone who is in the act of committing an indictable offence; or
 - anyone whom he has reasonable grounds for suspecting to be committing an indictable offence.

- Where an indictable offence has been committed, a person other than a constable may arrest without a warrant:
 - anyone who is guilty of the offence; or
 - anyone whom he has reasonable grounds for suspecting to be guilty of it.

- But the power of summary arrest conferred by paragraph (1) or (2) is exercisable only if:
 - the person making the arrest has reasonable grounds for believing that for any of the reasons mentioned in paragraph (4) it is necessary to arrest the person in question; and
 - it appears to the person making the arrest that it is not reasonably practicable for a constable to make it instead.
- The reasons are to prevent the person in question:
 - causing physical injury to himself or any other person;
 - suffering physical injury;
 - causing loss of or damage to property; or
 - making off before a constable can assume responsibility for him.

A summary of relevant legislation is available at www.ccea.org.uk

The member of staff should make the pupil fully aware of the implications before making the arrest, confirming:

- that the pupil is not free to leave once they have been informed by the arresting person why they are being arrested, and
- that they will be detained until they are handed over to a PSNI officer who will then deal with the investigation.

Staff must be able to recognise the point where a young person becomes a danger to either themselves or others. They should also be aware of their duty of protection because they are in loco parentis.

Finding drug-related paraphernalia

Paraphernalia in the school grounds is an indication of drug use or misuse. Any member of the school community who encounters any paraphernalia should use extreme care, as these items may be hazardous. Anyone who finds paraphernalia associated with drug use or misuse should report it to the Designated Teacher for Drugs, who will assess the situation and respond accordingly. This response may include contacting the PSNI.

The following list is not exhaustive. It gives teachers an idea of what may indicate the presence of controlled substances:

- small bottles or pill boxes;
- hypodermic needles;
- twists of paper;
- cigarette papers, lighters and spent matches;
- electronic cigarette liquid refill bottles (there is a potential risk that refillable cartridges used in some electronic cigarettes could be filled with substances other than nicotine, serving as a new and potentially dangerous way to deliver drugs);
- roaches (ends of rolled-up cigarettes);
- punctured cans, plastic bottles or containers;
- aerosols or butane gas refills; and
- drugs themselves.

Recording an incident

If the Principal considers an incident to be serious, the school should call the Education Authority or CCMS Designated Officer to alert them to the incident, take advice and then make a full written factual record of the incident. See appendix 1 for a Drug Incident Report Form and appendix 1.1 for an electronic version of this form. For an incident that requires only an internal school investigation, for example finding cigarettes on school property, any sensitive information about pupils will be treated in a confidential and secure manner. Reports will be treated as confidential and stored in a file in the Principal's office. Senior teachers will be used to supervise pupils if there is more than one pupil involved and separate discussions are required. However, as a primary school any drugs issue will be considered a safeguarding matter and will be dealt with under our Safeguarding and Child Protection Policy.

For an incident that requires a police investigation, the PSNI is responsible for investigating any criminal or suspected criminal offence. Under these circumstances, staff should not take any written statements from individuals involved in the incident. The investigating officer is responsible for dealing with the incident to co-ordinate recording all statements that could be required for a potential court case.

Involving parents or carers

Every effort will be made to keep parents or carers fully informed of school procedures in the event of suspected drug-related incidents. The designated teacher for drugs will carefully consider their approach when contacting parents or carers. They will try to contact the parents or carers before involving the police. They should also consider parents or carers who may be emotionally distressed in response to a suspected drug-related incident.

The designated teacher for drugs will direct parents or carers to the booklet *Dealing with Young People's Alcohol and other Drug Misuse – a guide for parents and carers* as a source of support, available at www.ccea.org.uk

Pastoral care

During and after any incident, the school must consider the individual needs of any pupil or pupils involved. This should involve the pupil or pupils, the principal, parents or carers and the designated teacher for drugs. It could also involve the PSNI officer and an education welfare officer, where appropriate. Communication between staff and early involvement of parents or carers may set the scene for early, supportive, pastoral intervention.

As part of planning a pastoral care response, schools should consider developing referral pathways (Appendix 8) that identify specific support agencies and contacts in their local area for a range of incidents.

Confidentiality

Teachers cannot and should not promise total confidentiality. They should make the boundaries of confidentiality clear to pupils. Members of staff should carefully consider their response, if a pupil approaches them for individual advice on drug use or misuse. In the case of controlled substances, the staff member should explain to the pupil that they cannot offer a guarantee of confidentiality. If the pupil discloses information concerning controlled substances, the staff member must pass this on to the designated teacher for drugs and the designated teacher for child protection.

Communication following a suspected or confirmed drug-related incident

Careful consideration will be given to communicating any information about a suspected or confirmed substance-related incident to staff, pupils and parents or carers. As far as possible information, will only be disclosed to members of staff concerned with the pastoral needs of the individual pupil. Staff should not discuss individual cases with other pupils. The school may, however, need to make a general statement informing the school community after an incident where rumours may create a negative atmosphere.

A parent or carer suspected to be under the influence of alcohol/another substance

If a parent or carer arrives at school to collect a child and appears to be under the influence of alcohol or another substance the class teacher/ classroom assistant will need to inform the Designated Teacher for Child Protection immediately. Appendix 4.5

Employees

The Health and Safety at Work (N.I.) Order 1978 requires the employer, i.e. BOG, to protect the health, safety and welfare of employees at work. The employee also has a legal responsibility to protect their own health and safety and that of their colleagues. The BOG has a designated Health and Safety representative. The BOG will refer to the “Drugs and Alcohol in the Workplace Guidance” (HSENI) with respect to problems associated with staff use of alcohol and/or other drugs.

Dealing with the Media

If the school receives an enquiry from the media the caller will only be referred to the principal or, in the absence of the principal, a designated nominee. When responding to the media the privacy of the pupil(s), his/her family and/or any staff members will be respected at all times.

Training and Information

Relevant staff and Governors will be offered any training provided by CCEA, EA or other relevant organisations to support the implementation of this policy including the delivery of the drug education programme that is integrated into the PDMU programme.

Links with Other Policies

This policy should not be seen in isolation and should be cross referenced with other policies; in particular, the Pastoral Care Policy, Safeguarding and Child Protection Policy, Promoting Positive Behaviour Policy, Supporting Pupils with Medication Needs Policy, Anti-bullying Policy, Staff Code of Conduct, Reasonable Force and Safe Handling Policy, PDMU Policy, Health and Safety Policy and Managing Critical Incidents Policy.

Monitoring and evaluation

The Board of Governors will monitor and evaluate the Drugs Policy

- Every 3 years **OR**
- After a suspected Drugs-related incident
- New circulars/guidance are published by CCMS/EA/DE

Appendices:

1: Drugs Incident Report Form

1.1: Online Drugs Incident Form

2: Checklist of Roles and Responsibilities When Managing an Incident

3: Main Types of Controlled Substances

4: Handling Drug Related Incidents

4.1 Finding a suspected substance or drug related paraphernalia on or close to the school premises.

4.2 Pupil suspected of having taken drugs/alcohol on school premises

4.3 Pupil suspected of possessing/distributing an illegal substance

4.4 Pupil in possession of alcohol or unauthorised prescribed medication on the school premises.

4.5 A parent/carers arrives to collect a child and appears to be under the influence of alcohol or another substance

5: Recognising the Signs of Substance Use

6: Signs and Symptoms of Drug Use



Drugs Incident Report Form

Name of Pupil _____ DOB _____ Address _____ _____	
Date of Incident _____ Reported by _____ Time of Incident _____ Location of Incident _____	
First Aid given YES/NO Administered by _____ Ambulance/Doctor Called YES/NO Time of Call _____	
Parent or carer informed: YES / NO Date _____ Time _____	
Where substance is retained _____ or Date substance destroyed or passed to PSNI _____	
PSNI informed YES/NO Date: _____ Time: _____	
Education Authority or CCMS Designated Officer informed, as appropriate YES/NO Date _____ Time _____	
Description of the Incident:	
Actions Taken:	
Form completed by Date: _____ Position: _____ Designated Teacher: _____	

Appendix 1.1:

Online Drugs Incident Form

<https://ccea.org.uk/downloads/docs/ccea-asset/Curriculum/Appendix%20-%20Drugs%20Incident%20Report%20Form.pdf>

Principal can use this form to email to CCMS/EA/PSNI

Drugs Incident Report Form

1	Name of Pupil	Date of Birth	Address
2	Date of Incident	Reported by	Address
	Time of Incident	Location of Incident	
3	First Aid Given		
YES <input type="radio"/> NO <input type="radio"/>			
4	Parent or Carer Informed		
YES <input type="radio"/> NO <input type="radio"/>			
5	Was the Substance Retained <input type="radio"/> Destroyed <input type="radio"/> or Passed to PSNI <input type="radio"/>		
6	Was the Education Authority Informed		
YES <input type="radio"/> NO <input type="radio"/>			
7	Was the CCMS Designated Officer Informed		
YES <input type="radio"/> NO <input type="radio"/>			
8	Form Completed by		Date
Position			
Description of the Incident			
Actions Taken			
Incident Form Completed by			Date

Appendix 2

Checklist of Roles and Responsibilities When Managing an Incident

Individual staff members should:

- assess the situation and decide the action;
- make the situation safe for all pupils and other members of staff, secure first aid and send for additional staff support, if necessary;
- carefully gather up any drugs and/or associated paraphernalia or evidence and pass all information or evidence to the designated teacher for drugs; and
- write a brief factual report of the incident and forward it to the designated teacher for drugs.

The designated teacher for drugs should:

- respond to first aider's advice or recommendations;
- inform parents or carers immediately, in the case of an emergency;
- take possession of any substance(s) and associated paraphernalia found;
- inform the principal;
- take initial responsibility for pupil(s) involved in the suspected incident; and
- complete a Drugs Incident Report Form (see Appendix 5) and forward it to the principal.

The principal should:

- determine the circumstances surrounding the incident;
- ensure that the following people are informed:
 - parents or carers;
 - designated officer in the local PSNI area;
 - Board of Governors; and
 - designated officer in Education Authority or CCMS.
- consult and agree pastoral and disciplinary responses, including counselling services or support;
- forward a copy of the Incident Report Form to the chairperson of the Board of Governors and the designated officer in the Education Authority or CCMS, if appropriate; and
- review procedures and amend, if necessary

Appendix 3

Main Types of Controlled Substances by Class

The Misuse of Drugs Act (1971)

Class	Substance	Possession	Supply and production
A	Crack cocaine, cocaine, ecstasy (MDMA), heroin, LSD, magic mushrooms, methadone, methamphetamine (crystal meth)	Up to 7 years in prison, an unlimited fine or both	Up to life in prison, an unlimited fine or both
B	Amphetamines, barbiturates, cannabis, codeine, methylphenidate (Ritalin), synthetic cannabinoids, synthetic cathinones (for example mephedrone or methoxetamine)	Up to 5 years in prison, an unlimited fine or both	Up to 14 years in prison, an unlimited fine or both
C	Anabolic steroids, benzodiazepines (diazepam), gamma hydroxybutyrate (GHB), gamma-butyrolactone (GBL), ketamine, piperazines (BZP)	Up to 2 years in prison, an unlimited fine or both	Up to 14 years in prison, an unlimited fine or both
Temporary class substance	NBOMe and Benzofuran compounds	None, but police can take away a suspected temporary class substance	Up to 14 years in prison, an unlimited fine or both

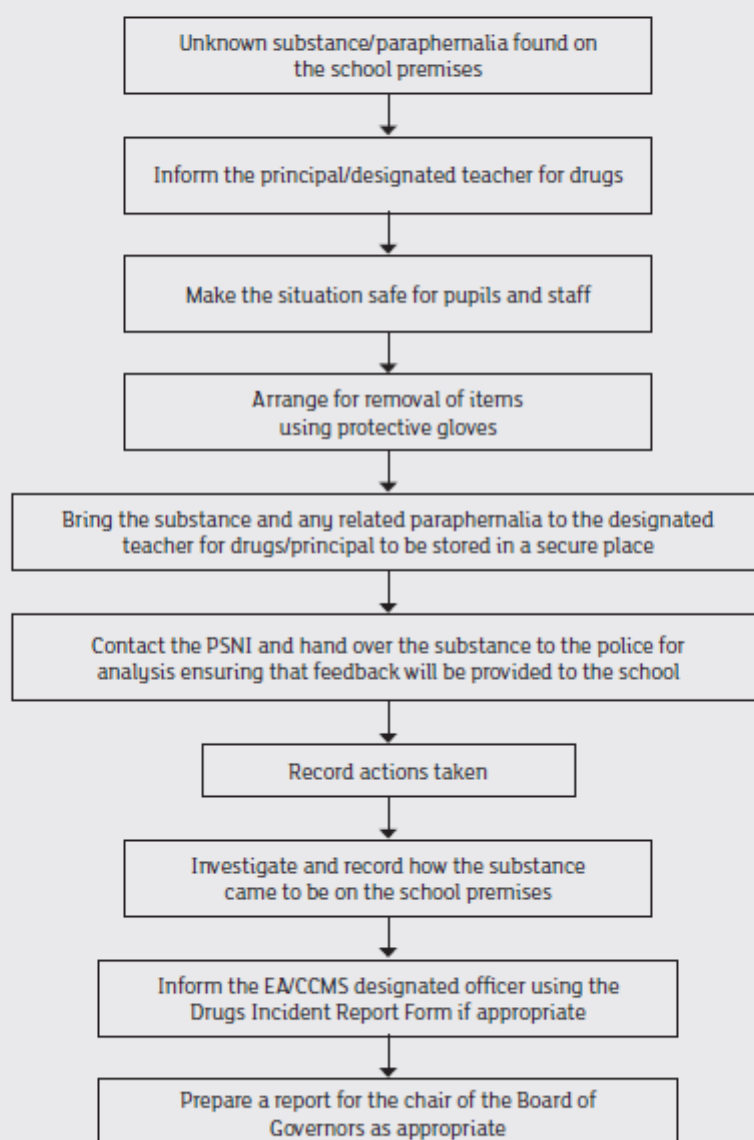
www.gov.uk/penalties-drug-possession-dealing

Please note the above table refers to some commonly available drugs. It is not a complete list of controlled drugs.

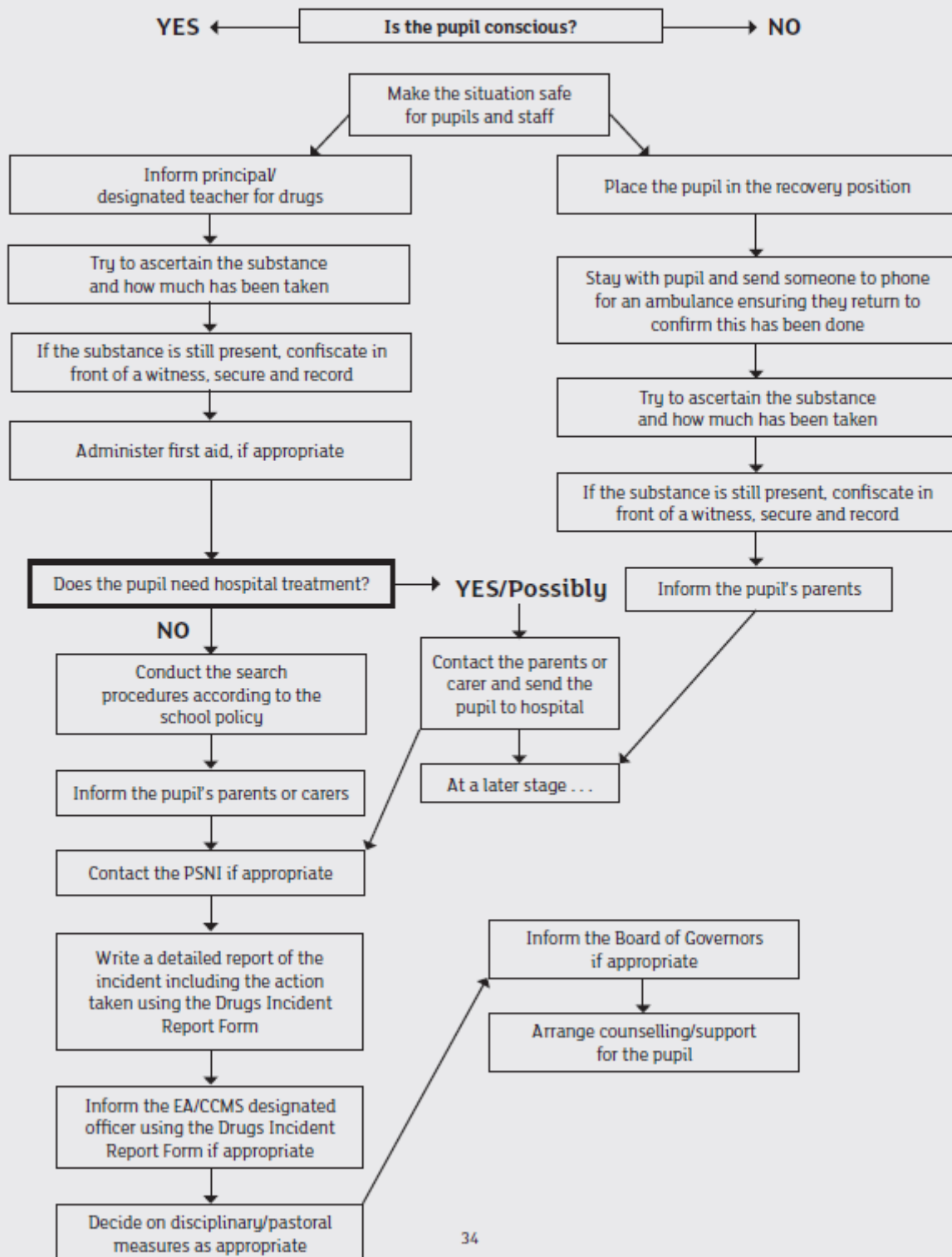
Appendix 4

Handling Drug-Related Incidents

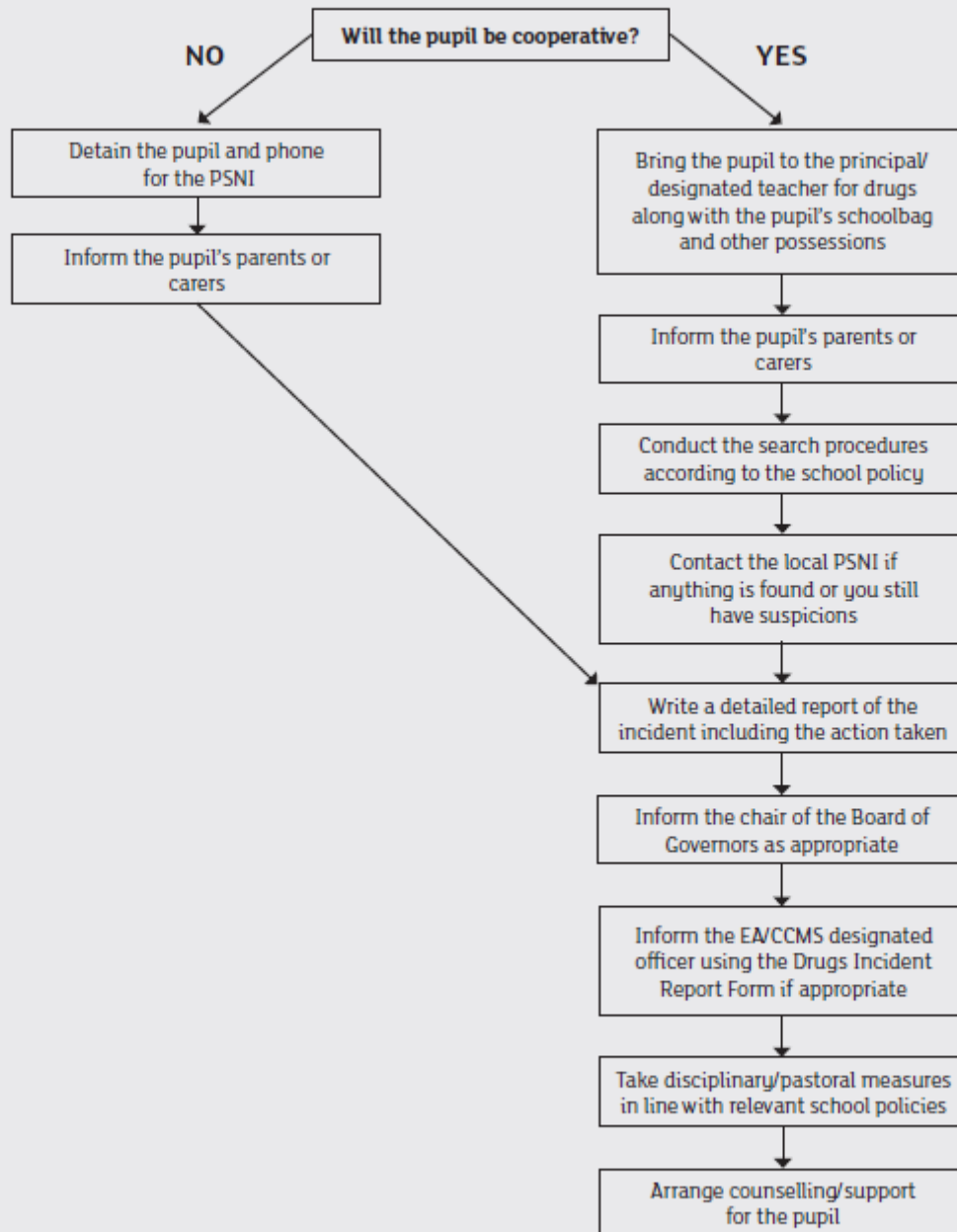
4.1 Finding a suspected substance or drug-related paraphernalia on or close to the school premises



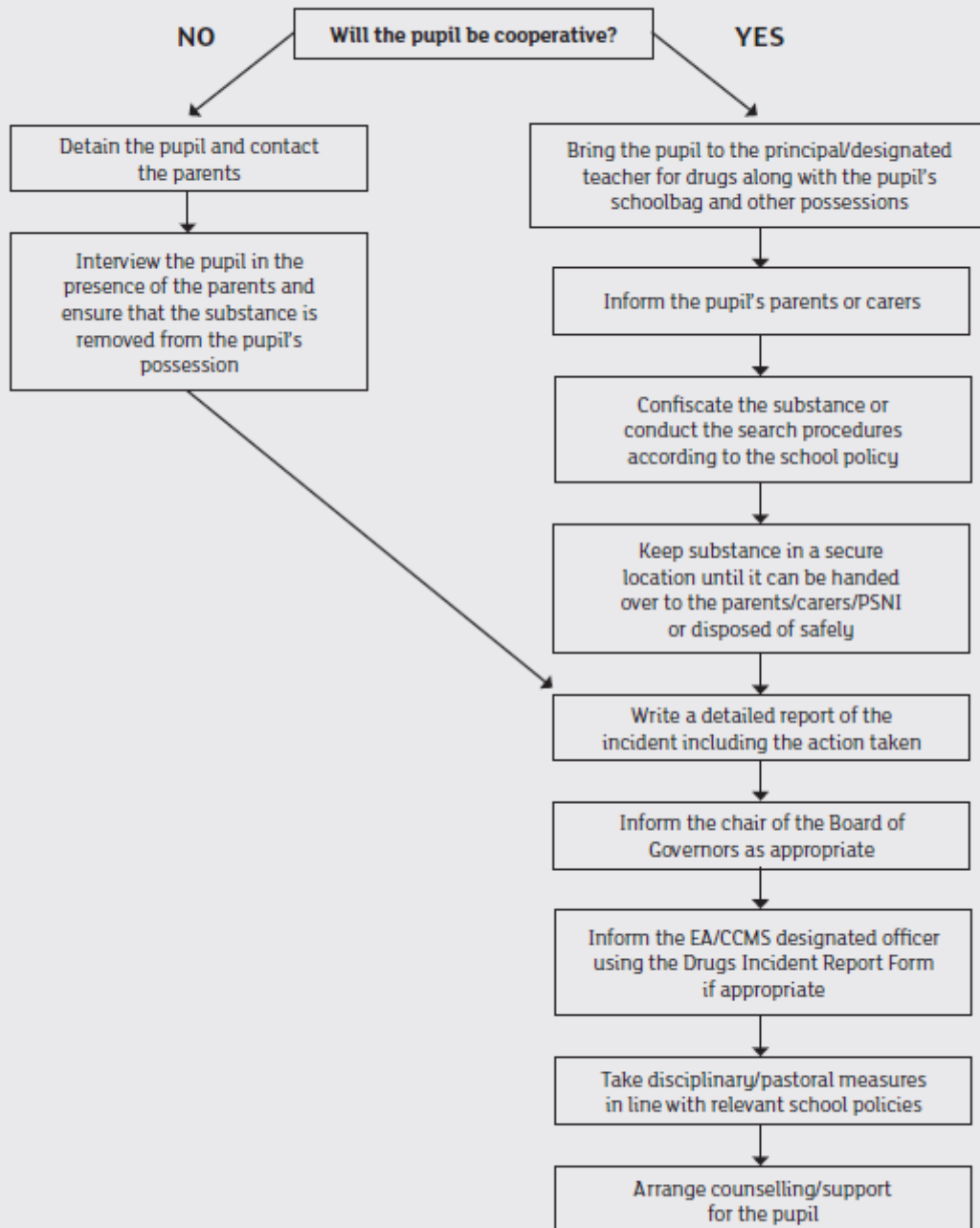
4.2 Pupil suspected of having taken drugs/alcohol on school premises



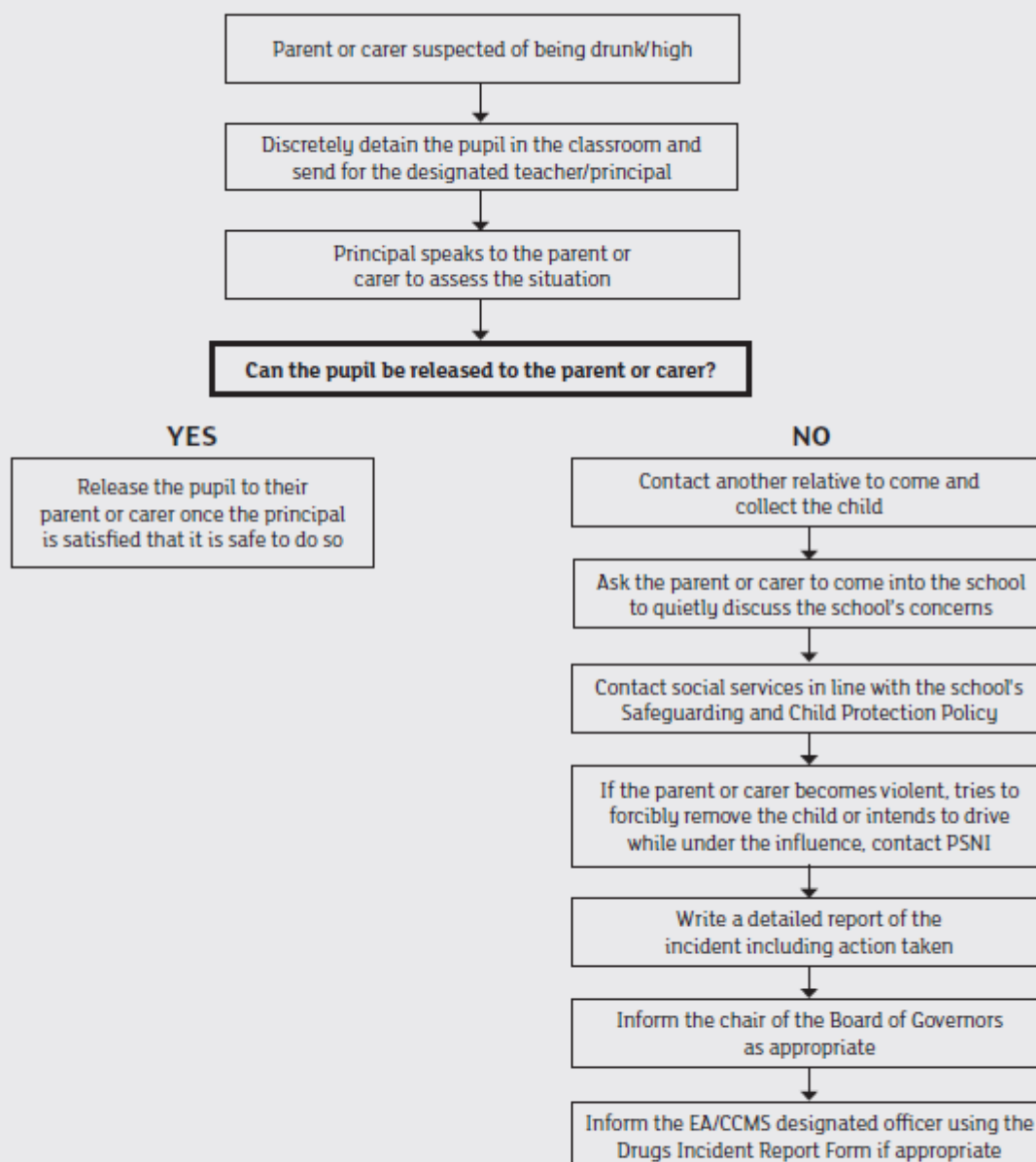
4.3 Pupil suspected of possessing/distributing an illegal substance



4.4 Pupil in possession of alcohol or unauthorised prescribed medication on the school premises



4.5 A parent or carer arrives at school to collect a child and appears to be under the influence of alcohol or another substance



Appendix 5

Recognising Signs of Substance Use

What to look out for

If someone is having a bad time on drugs, they may be:

- anxious;
- tense;
- panicky;
- overheated and dehydrated;
- drowsy; or
- having difficulty with breathing.

What to do

The first things you should do are:

- stay calm;
- calm them and be reassuring, don't scare them or chase after them;
- try to find out what they've taken; and
- stay with them.

If they are anxious, tense or panicky, you should:

- sit them in a quiet and calm room;
- keep them away from crowds, bright lights and loud noises;
- tell them to take slow deep breaths; and
- stay with them.

If they are really drowsy, you should:

- sit them in a quiet place and keep them awake;
- if they become unconscious or don't respond, call an ambulance immediately and place them in the recovery position;
- don't scare them, shout at them or shock them;
- don't give them coffee to wake them up; and
- don't put them in a cold shower to 'wake them up'.

If they are unconscious or having difficulty breathing, you should:

- immediately phone for an ambulance;
- place them into the recovery position;
- stay with them until the ambulance arrives; and

- if you know what drug they've taken, tell the ambulance crew; this can help make sure that they get the right treatment straight away.

Appendix 6



Signs and Symptoms of Drug Use

Recognising current drug use is a major issue for many professionals who work with young people. There is also the issue of identifying those young people who may be at increased risk of using drugs. Below are specific physical and behavioural signs that may be associated with drug use. Some of these, however, can indicate the onset of adolescence.

Physical Signs

These can differ depending on the type of drug taken, for example a stimulant or hallucinogen. Below are some of the physical signs related to drugs used illicitly in Northern Ireland.

Solvents

Solvents include glues, butane gas refills, aerosols, typewriting correcting fluids and thinners.

Signs to look out for include:

- usual signs of intoxication – unco-ordinated movement or slurred speech;
- possible odour on clothes and breath;
- redness around the mouth and nose, if using glue;
- a cough; and
- possible stains on clothing, depending on type of solvent used.

Cannabis

Cannabis can have the effect of a depressant or mild hallucinogen, depending on the amount taken and situational factors. The effects of taking cannabis include:

- a tendency to laugh easily;
- becoming talkative;
- relaxed behaviour;
- reddening of the eyes; and
- hunger.

If the drug is smoked, it produces a distinctive sweet smell.



Signs and Symptoms of Drug Use

Ecstasy

Ecstasy is sometimes referred to as a hallucinogenic stimulant. Its effects will therefore include those listed for stimulants. It can also cause:

- increased temperature;
- excessive sweating;
- a very dry mouth and throat;
- jerky, unco-ordinated movements;
- clenched jaws;
- occasional nausea, when first used; and
- fatigue after use, but also possibly some anxiety, depression and muscle pain.

Stimulants (amphetamines (speed), butyl nitrite (poppers) or cocaine)

The effects can result in:

- increased pulse rate;
- increased blood pressure;
- agitation;
- talkativeness or lack of coherent speech;
- dilated pupils;
- loss of appetite;
- damage to nasal passages;
- increased tendency to go to the toilet;
- mouth ulcers; and
- fatigue after use.

Hallucinogens (LSD, magic mushrooms)

Effects can vary depending on nature of the experience. These include:

- relaxed behaviour;
- agitated behaviour;
- dilation of pupils; and
- unco-ordinated movements.



Signs and Symptoms of Drug Use

Heroin

Heroin acts as a depressant. The effects of taking heroin include:

- decrease in breathing and heart rate;
- suppression of cough reflex;
- increase in size of certain blood vessels;
- itchy skin;
- runny nose;
- decreasing body temperature; and
- sweating.

Behavioural Signs

Drug use can often cause behavioural changes. These changes can be difficult to recognise.

Some prior knowledge of the person is required to make an accurate evaluation of behaviour.

The changes can be obvious or very subtle and may be due to some other reason, unconnected with drug use.

Signs can include:

- efforts to hide drug use through lying, evasiveness and secretive behaviour;
- unsatisfactory reasons for unexpected absences or broken promises;
- changes in friendships;
- changes in priorities, including less concern with school work, less care of personal appearance, non-attendance at extra-curricular activities;
- efforts to get money for drug use, ranging from saving dinner or allowance money, borrowing from friends or relatives or selling own possessions to stealing from friends or home or involvement in petty crime; and
- secretive telephone calls.

Other possible signs include:

- being very knowledgeable about drugs and the local drug scene;
- a defensive attitude towards drugs and drug taking;
- unusual outbreaks of temper;
- absence from or poor performance at school or work experience on days following nights out in nightclubs or bars; and
- a pattern of absences on a certain day.

These signs may often only become apparent in pupils who are using drugs on a regular basis. Such signs can be difficult to see in the experimental or casual drug user.